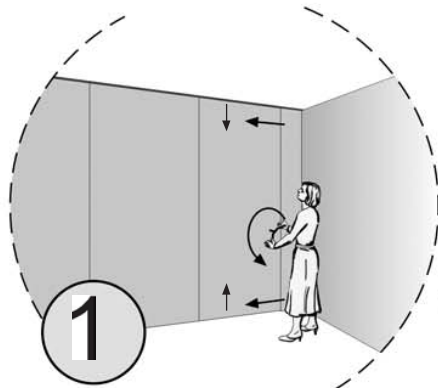


users guide | panel with door

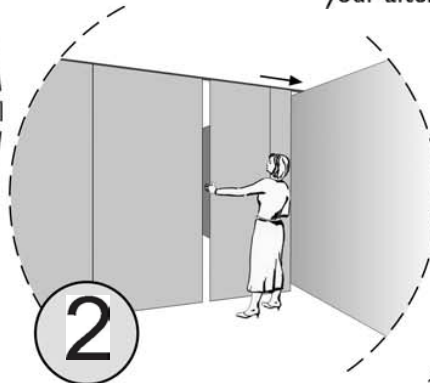
your after sales service: +49 340 540796-13



1

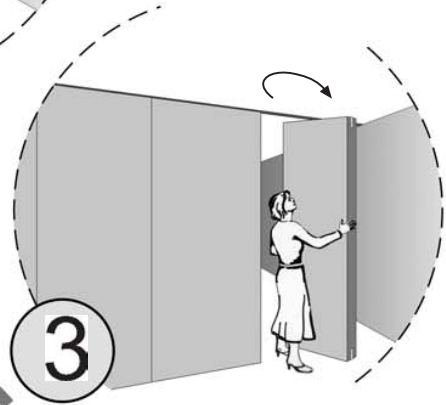
open

with the handle first left (1) unlock: top and bottom seals; then right (2): release the side anchoring



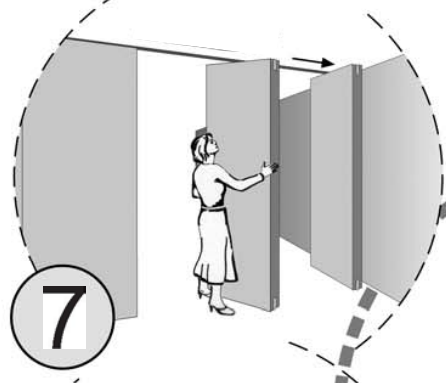
2

After unlocking the panel, turn immediately in 90° position to avoid damages.

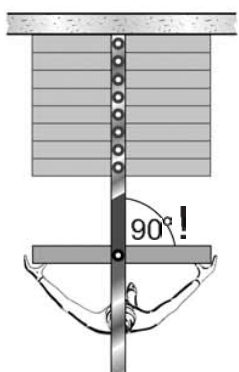


3

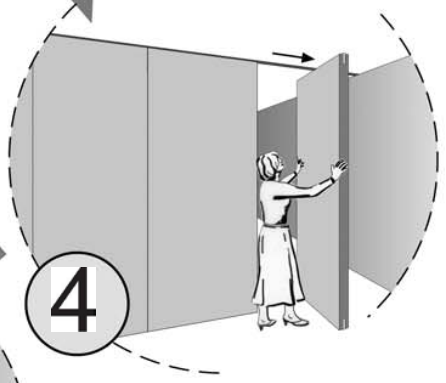
When moving the panels pay attention to the 90° position.



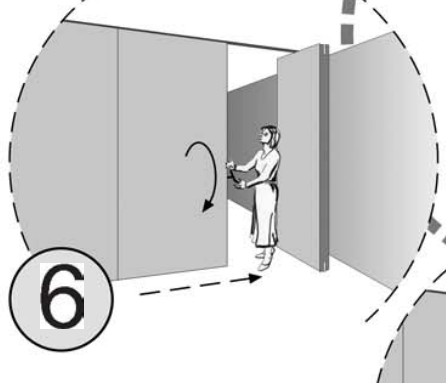
4



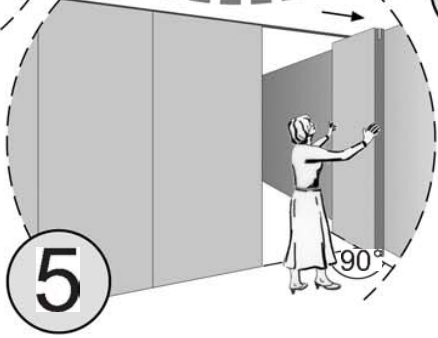
90°!



6



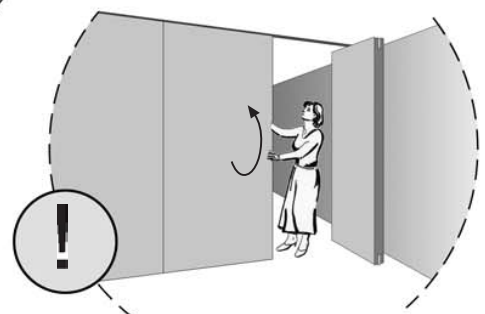
7



8

close

the mobile partition in reversed order: Locking of panels by turning the handle to the right.



9

Panel with door:
please look at separate
description on backside.

